



Keeping South Florida Healthy  
& Fit for over 24 Years!

*LifeFitness*

# INTEGRITY + ELLIPTICAL



## EXPERIENCE PREMIUM CARDIO

Combines eye-catching design, an extremely natural feeling, and immersive experiences provided by the vivid Discover SE4 console.



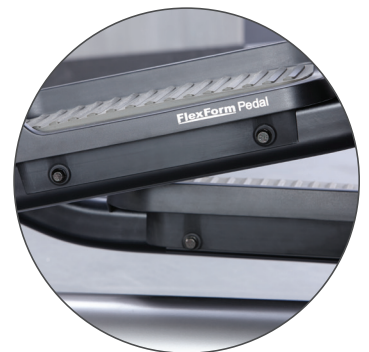
### CONSOLE INNOVATION

The vivid Discover SE4 Console has a large 24" screen (16" also available) that offers an incredibly immersive workout experience and access to hundreds of workouts through Life Fitness™ On Demand+.



### NATURAL STRIDE

The 20" (50.8 cm) stride has a smooth and fluid motion developed from years of research. A large area of knee clearance makes it comfortable for tall exercisers.



### OVERSIZED FLEX FORM PEDALS

The large 15" (38 cm) Flex Form™ crowned pedal helps reduce numb foot. The non-slip pedal surface is easy to clean (available on Deluxe Base only).



561-712-0381



COASTALFITNESS@AOL.COM



WWW.COASTALFITNESS.COM

# INTEGRITY+ ELLIPTICAL

## CONSOLE OPTIONS

Choose from the immersive experiences provided by the Discover SE4 Console (available in 24" and 16" sizes) or the get-on-and-go functionality of the SL Console.



DISCOVER SE4 CONSOLE



SL CONSOLE

## SPECIFICATIONS

BASE FEATURES	
20" (50.8 cm) ergonomic fixed stride	•
Multigrip handles with remote resistance controls	•
Resistance levels	0-25
Oversized 15" (38 cm) FlexForm™ pedals	•
Removable locking cup holders	1
Low step-up height	•
FRAME	
Generator drive system	•
Rear wheels for easy mobility	•
Stride Sensor	•
Adjustment levelers for product stability	•
Quick-release removable shroud for simple serviceability	•
Robust paint (corrosion, stain, and chemical resistant coating)	•
Arctic Silver, Titanium Storm, Diamond White, Smooth Charcoal, and Black Onyx Frames	•

TECHNICAL SPECIFICATIONS	
Max user weight	400 lbs (181 kg)
Length	86" (218 cm)
Width	29" (73 cm)
Height	64" (163 cm)
Unit weight	301 lbs (137 kg)
POWER REQUIREMENTS	
Self-powered (SL console only)	•
120V, 20A or 230V, 10A (varies by country) outlet	•
Japan: 100V, 20A or 200v, 10A outlet	•
WARRANTY*	
Parts and Labor	3 Years

\* Visit [LifeFitness.com/warranties](http://LifeFitness.com/warranties) for full warranty details.



561-712-0381



COASTALFITNESS@AOL.COM



WWW.COASTALFITNESS.COM